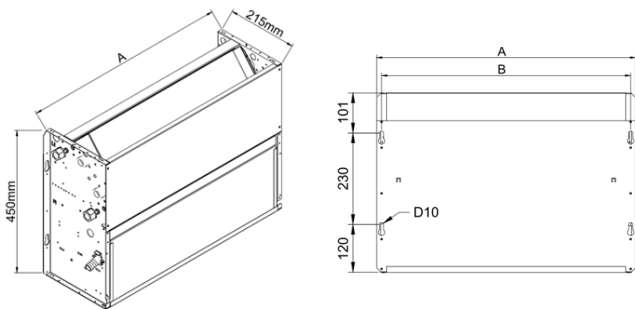


Built-In Fan Coil Data Sheet

The FC-HBI units offer discreet and space-saving heating and cooling solutions, delivering efficient temperature regulation while remaining concealed within false ceilings or walls. Designed for seamless integration, they are an ideal choice for applications where aesthetics and performance are equally important.

Dimensions

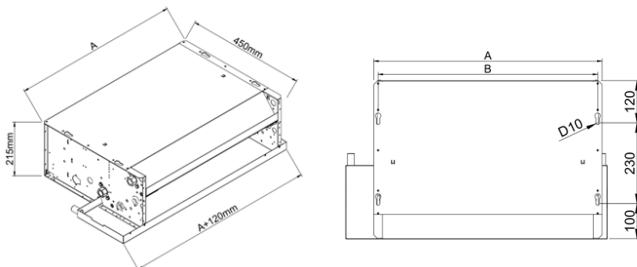
Vertical



FC-VBI	1.5	2	2.5	3*	4	4.5	5	6*	6.5	8*
A (mm)	450	450	650	650	850	850	1050	1050	1250	1250
B (mm)	425	425	625	625	825	825	1025	1025	1225	1225
Weight (kg)	11	11.6	14	15	20	21	23.5	25	27.5	29

*Allow an additional 105mm for the optional Auxiliary drain pan

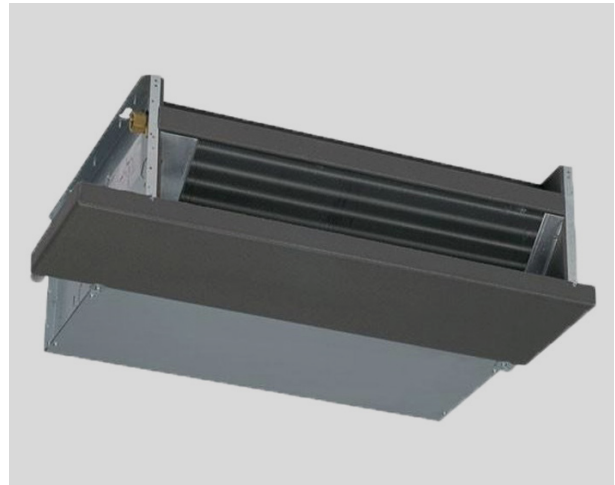
Horizontal



FC-HBI	1.5	2	2.5	3*	4	4.5	5	6*	6.5	8*
A** (mm)	430	430	630	630	830	830	1030	1030	1230	1230
B (mm)	425	425	625	625	825	825	1025	1025	1225	1225
Weight (kg)	11	11.6	14	15	20	21	23.5	25	27.5	29

*Units stocked by CHNZ - all others available via indent order

** Dimension A+ includes drain pan



- Low-noise performance for a quiet and comfortable space
- Compact design to suit areas with limited space and protect interior style
- 0-10V signal modulation for real-time fan speed control
- Wide range of output capacities and sizes to match different needs
- Multiple configuration options: out front, in back and out front, or in bottom. Coil can be swapped and piped from the left-hand side
- 2-pipe system with 1/2" BSP female connection ports

Performance

Performance at nominal conditions is included in the table below, for performance figures at other conditions please contact us:

FC-HBI		1.5	2	2.5	3*	4	4.5	5	6*	6.5	8*
Total Cooling @ 7/12/25°C 50%RH	W	1651	2095	2538	2862	4246	4614	5344	6052	6500	7680
Sensible Cooling @ 7/12/25°C 50%RH	W	1492	1769	2151	2247	3430	3676	4318	4642	4960	6893
Cooling Flow Rate	l/h	284	360	437	492	730	794	919	1041	1118	1321
Cooling Pressure Drop	kPa	15.9	17.9	18.6	18.7	29	28.5	23	24.1	21.5	21.2
Heating @ 45/40/20°C	W	2390	2977	3464	3658	5375	5945	6691	7210	7650	8800
Heating Flow Rate	l/h	411	512	596	629	925	1023	1151	1240	1316	1514
Heating Pressure Drop	kPa	28.9	31.4	30.1	26.5	40.4	41	31.3	29.7	25.8	24.2
Air Flow @ 0 Pa	m ³ /h	537	536	625	627	1018	1022	1180	1187	1255	1255
Max Sound Power	dB(A)	45	45	47	47	45	45	46	46	46	46
Max Input Power	W	70	70	70	70	75	75	75	75	75	75

*Units stocked by CHNZ - all others available via indent order

Fittings Kit

To simplify the installation a valve and fittings kit for the FC-HBI fan coils is available from CHNZ – FCFITHBI.



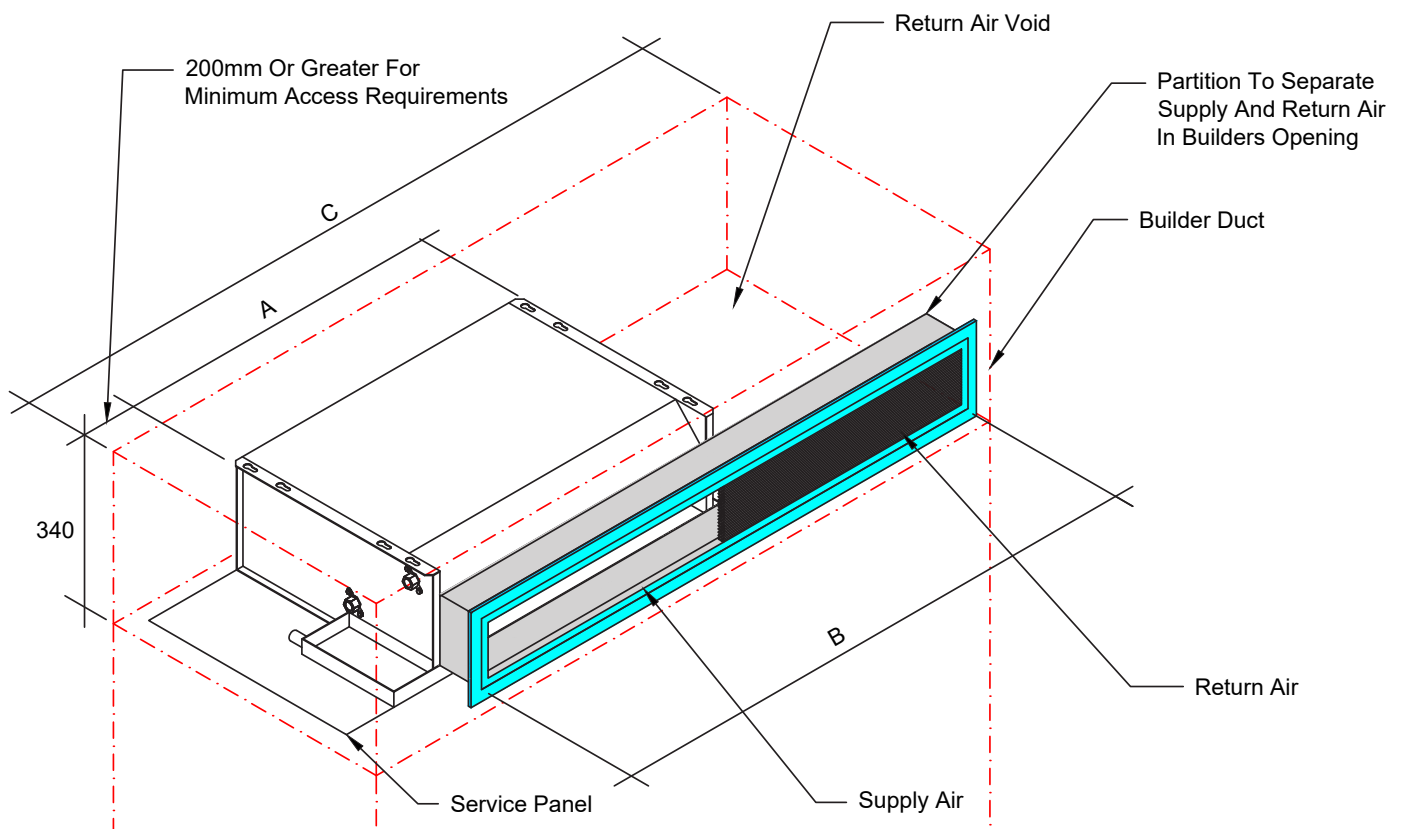
Quantity	Description	Product Code
2	Brass 1/2" BSP Hex Nipple - Plain	HMHBHN15
2	Brass 3/4" - 1/2" BSP Reducing hex nipple – With seal face	HMHBRHNS2015
2	Brass 1/2" BSP Female tee	HMHBFT15
2	3/4" Swivel union ball valve	BXCKHT
2	1/2" Drain/fill tap	DRAINTAP15

Standard Grilles

For the 3 stocked sizes of the FC-HBI fan coils CHNZ also have standard grill options available. The standard grill options allow either a built-in or bulkhead type installation;

Built-In

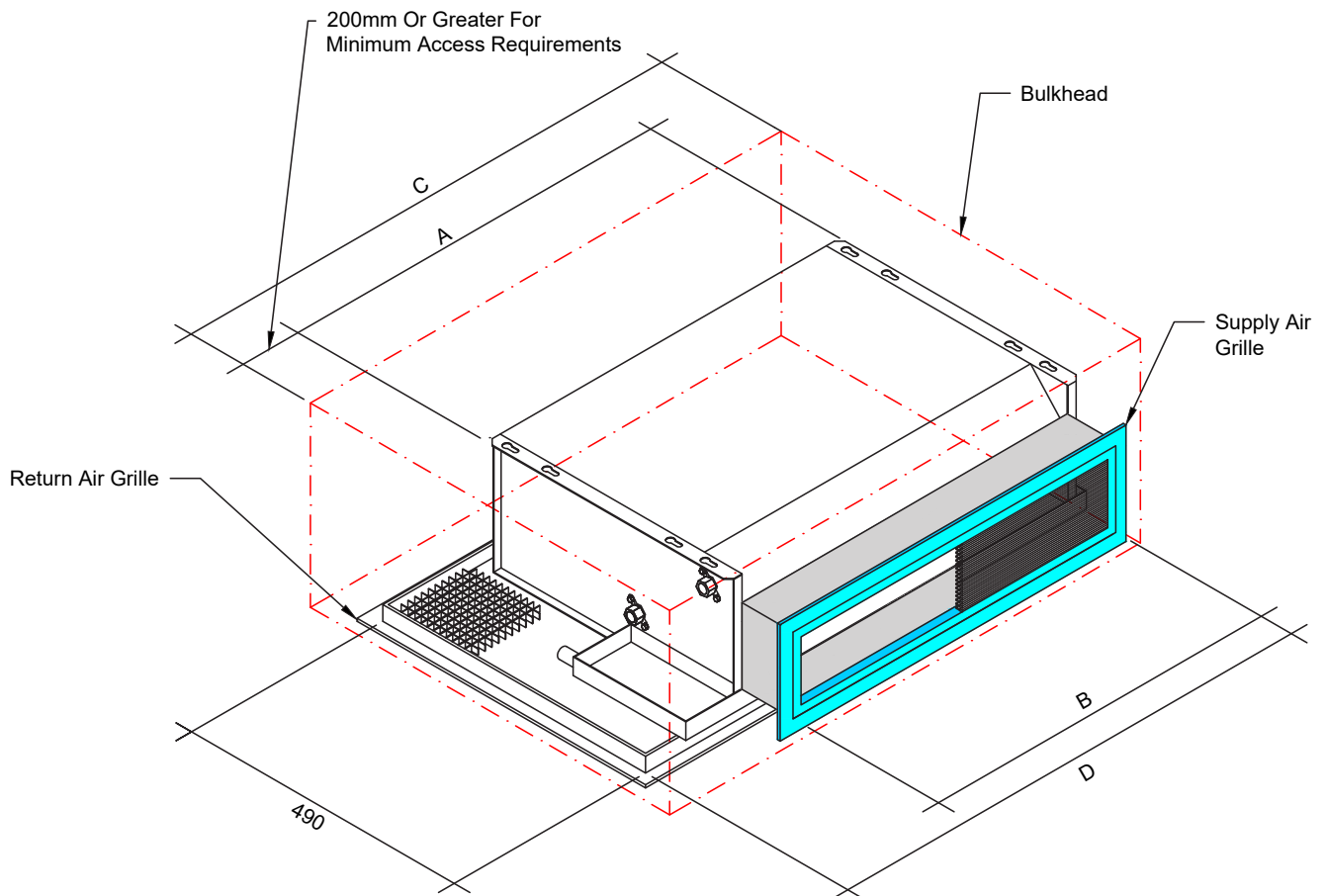
The Built-In grille option uses a single bar grille to act as both the supply and return grille, a section of the grille includes a removable filter and this should be partitioned from the supply section in the grille framing. The standard grille sizes for this option are shown in the table below:



Fan Coil Model	Grille Size mm (B)	Return Section Width mm	Product Code
FC-HBI-3	140 x 1110	478	FCALD600-RC-EN1110x140
FC-HBI-6	140 x 1890	768	FCALD600-RC-EN1890x140
FC-HBI-8	140 x 2145	913	FCALD600-RC-EN2145x140

Bulkhead

The Bulkhead grille option uses a bar grille to act as the supply grille and an egg crate grille to act as the return grille, the egg crate return grill also acts as the access panel for the unit. The standard grille sizes for this option are shown in the table below:



Fan Coil Model	Grille Size Width mm (B)	Product Code	Return Grille mm (D)	Product Code
FC-HBI-3	140 x 602	FCALD600-RC-EN602x140	835	FCAEC-125FR-B-EN852x490
FC-HBI-6	140 x 1002	FCALD600-RC-EN1002x140	1235	FCAEC-125FR-B-EN1252x490
FC-HBI-8	140 x 1202	FCALD600-RC-EN1202x140	1435	FCAEC-125FR-B-EN1452x490

Where the grille sizes required for a unit need to be different from the standard sizes included in the above tables, please contact CHNZ to confirm suitability and pricing.