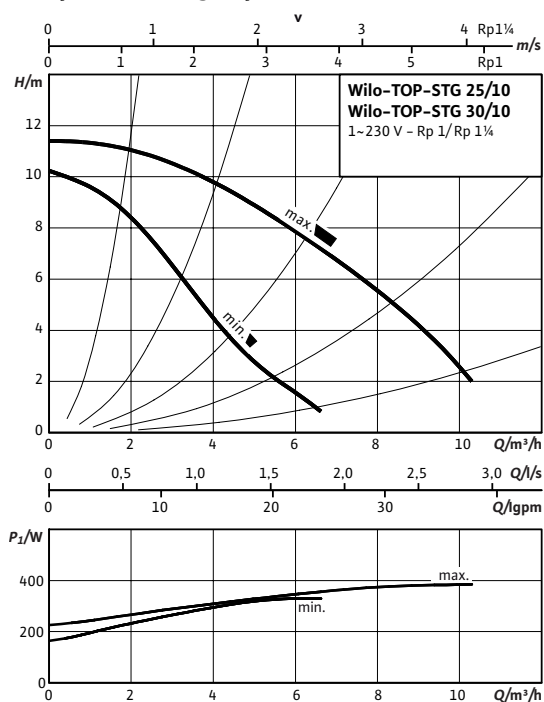
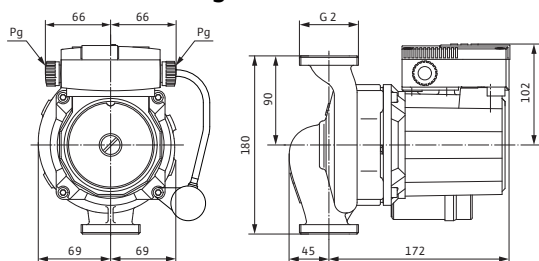


## Data sheet: Wilo-TOP-STG 30/10 (1~230 V, PN 10)

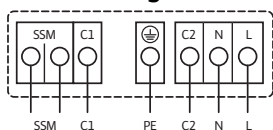
### Pump curves Single-phase current



### Dimension drawing



### Terminal diagram



Mains connection 1~230 V, 50 Hz

Full motor protection with integrated trip electronics in terminal box for all speed stages

Triggering: All-pole shutdown of motor by integrated trip electronics

Reset: Manual reset at terminal box necessary

Load capacity of the potential-free NC contact according to VDI 3814 for the collective fault signal (SSM) 1 A, 250 V ~

For function, see Wilo catalogue, chapter "Pump management Wilo control, planning guide"

### Approved fluids (other fluids on request)

Heating water (in accordance with VDI 2035) -

Water-glycol mixtures (max. 1:1; above 20% admixture, the pumping data must be checked) •

### Permitted field of application

Temperature range at max. ambient temperature of +40 °C -20 up to +110 °C (in short-term operation 2 h: +130 °C) °C

Maximum permissible operating pressure  $P_{max}$  10 bar

### Pipe connections

Threaded pipe union Rp 1¼

Thread G 2

Overall length  $l_o$  180 mm

### Motor/electronics

Emitted interference EN 61000-6-3

Interference resistance EN 61000-6-2

Protection class IP X4D

Insulation class H

Mains connection 1~230 V, 50 Hz

Nominal motor power  $P_2$  180 W

Speed  $n$  2400 / 2700 rpm

Power consumption 1~230 V  $P_1$  335 / 390 W

Current at 1~230V  $I$  1.72 / 1.90 A

Capacitor 8.0 µF / 400 VDB

Threaded cable connection  $PG$  2x13.5

Motor protection integrated

### Materials

Pump housing Grey cast iron (EN-GJL-200)

Impeller Plastic (PP - 50% GF)

Pump shaft Stainless steel (X46Cr13)

Bearing Carbon, metal impregnated

### Minimum suction head at suction port for avoiding cavitation at water pumping temperature

Minimum suction head at 50 / 95 / 110 / 130 °C 0.5 / 5 / 11 / 0 m

### Information for order placements

Make Wilo

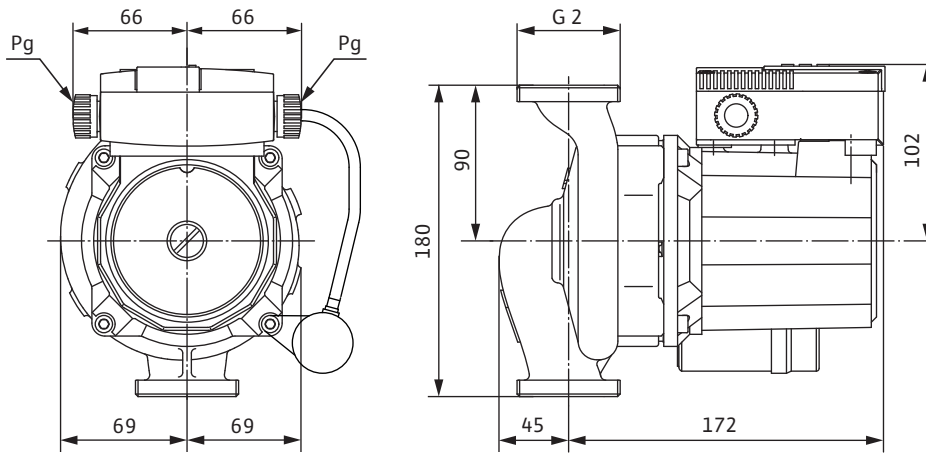
## Data sheet: Wilo-TOP-STG 30/10 (1~230 V, PN 10)

|                |               |         |
|----------------|---------------|---------|
| Type           | TOP-STG 30/10 |         |
| Art no.        | 2131676       |         |
| Weight approx. | <i>m</i>      | 6.30 kg |

• = available, = not available

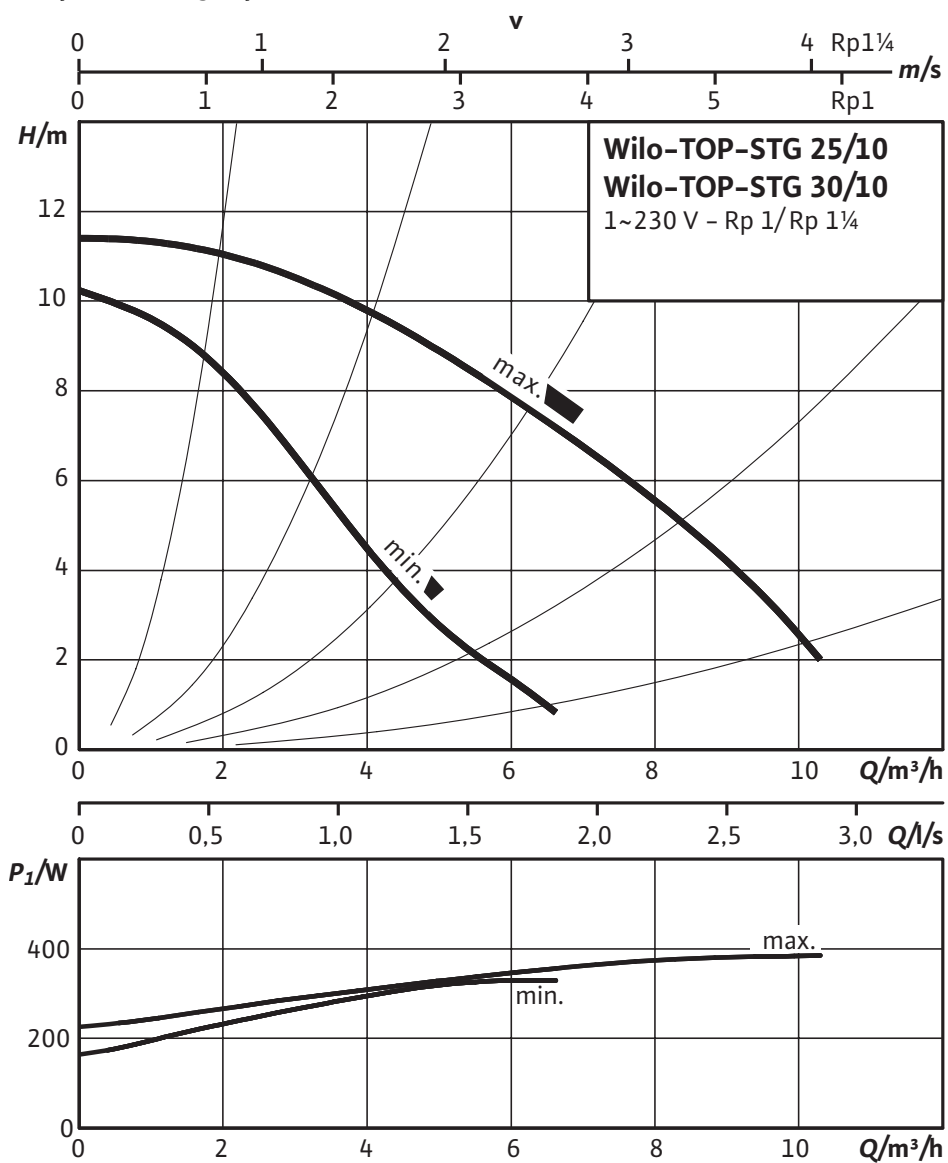
Dimensions and dimension drawings: Wilo-TOP-STG 30/10 (1~230 V, PN 10)

Dimension drawing



## Pump curves: Wilo-TOP-STG 30/10 (1~230 V, PN 10)

### Pump curves Single-phase current



## Ordering information: Wilo-TOP-STG 30/10 (1~230 V, PN 10)

### Information for order placements

|                |          |               |
|----------------|----------|---------------|
| Make           |          | Wilo          |
| Type           |          | TOP-STG 30/10 |
| Art no.        |          | 2131676       |
| EAN number     |          | 4048482310244 |
| Discount group |          | W2            |
| Gross weight   | <i>m</i> | 7.20 kg       |
| Weight approx. | <i>m</i> | 6.30 kg       |
| Packaging type |          | Cardboard box |

## Specification texts: Wilo-TOP-STG 30/10 (1~230 V, PN 10)

Can be used for primary circuits in solar and geothermal systems.

Maintenance-free glandless circulation pump with threaded or flange connection, pre-selectable speed stages for power adjustment.

Equipment and function

- Manual power adjustment with 3 speed stages
- Pumps with 1~ motor:
  - P<sub>2</sub> up to 90 W: Internal protection against unacceptably high winding temperatures
  - P<sub>2</sub> = 180 W: Full motor protection by thermal winding contacts in combination with tripping unit
- Pumps with 3~ motor:
  - P<sub>2</sub> up to 90 W: Internal protection against unacceptably high winding temperatures
  - P<sub>2</sub> ≥ 180 W: Full motor protection with integrated trip electronics
- Mains connection 3~230 V with optional switching plug
- Cataphoretic-coated pump housing for optimal corrosion protection
- PN 6/PN 10 combination flange (for DN 40 to DN 65)
- Additional functions with retrofittable Protect Module C:
  - SSM fault signal as potential-free NC contact
  - SBM run signal as potential-free NO contact
  - "Overriding Off" control input via external potential-free contact (NC contact)
- Blockage detection
- Full motor protection with integrated tripping
- Fault acknowledgement
- Dual pump management (two single pumps installed in parallel): Main/standby operation (automatic fault-actuated switchover/time-sensitive pump alteration)

Materials

Pump housing: Grey cast iron (EN-GJL-200)

Impeller: Plastic (PP – 50% GF)

Pump shaft: Stainless steel (X46Cr13)

Bearing: Carbon, metal impregnated

Approved fluids (other fluids on request)

Max. volume flow: 10 m<sup>3</sup>/h

Max. delivery head: 11.5 m

Permitted field of application

Temperature range at max. ambient temperature +40 °C: -20 up to +110 °C (in short-term operation 2 h: +130 °C) °C

Pipe connections

Threaded pipe union: Rp 1¼

Thread: G 2

Overall length: 180 mm

Motor/electronics

Emitted interference: EN 61000-6-3

Interference resistance: EN 61000-6-2

Protection class: IP X4D

Insulation class: H

Mains connection: 1~230 V, 50 Hz